

PARTNERING *with* HICKORY LOG
a personal care home



PARTNERSHIP OPPORTUNITIES

PARTNERING with HICKORY LOG

a personal care home

HISTORY of HICKORY LOG

Incorporated on May 21, 1970, Hickory Log Vocational School, Inc. began as the vision of Sarah and Al Munn to provide a place of vocational training for boys with special needs. Their son Rey, who had Down syndrome, was the inspiration of their philanthropic endeavor. The Munn's efforts were focused on males between the ages of sixteen and thirty with intellectual and developmental disabilities.

The school was established on 23 acres located in the eastern portion of Bartow County Georgia in the rural city of White. For generations, the plot of land served as a *pauper farm*. The pauper farm concept was popular in rural counties. The designated land provided a place where people in need could reside to establish economic footing. For over fifty years, Hickory Log has remained on the same land.

Over the years, Hickory Log transitioned into a personal care home and became a permanent home for the residents. In 1999, Hickory Log was awarded a generous grant

and construction on our current building was completed in December 2002.

Hickory Log is proud to continue in the rich humanitarian heritage of the land on which we reside. For generations, this little plot of land provided safety and hope for people in need. Aided by the immense support of our community and corporate partners, the resolute investment of our Board of Directors, and the passionate care of our staff and volunteers, Hickory Log fosters a loving, supporting, and empowering environment where each of our residents can thrive.

TODAY at HICKORY LOG

Hickory Log is a private non-profit that can house up to twenty-four residents; we currently have eighteen guys. We do not receive money from the government because our model does not fit into the their regulations for approved special needs housing. Our residents pay rent, but that amount does not cover all the bills. *We are beyond fortunate to have the love and support of the generous community.*

Our purpose is to love everyone with a heart of compassion, service, and grace. This purpose is manifested through our mission of providing a safe place to call home for men with special needs. *Hickory Log's goal is to foster an environment where our residents will hone their relational, vocational, and financial skills in a manner that champions independence within the personal care home model.*

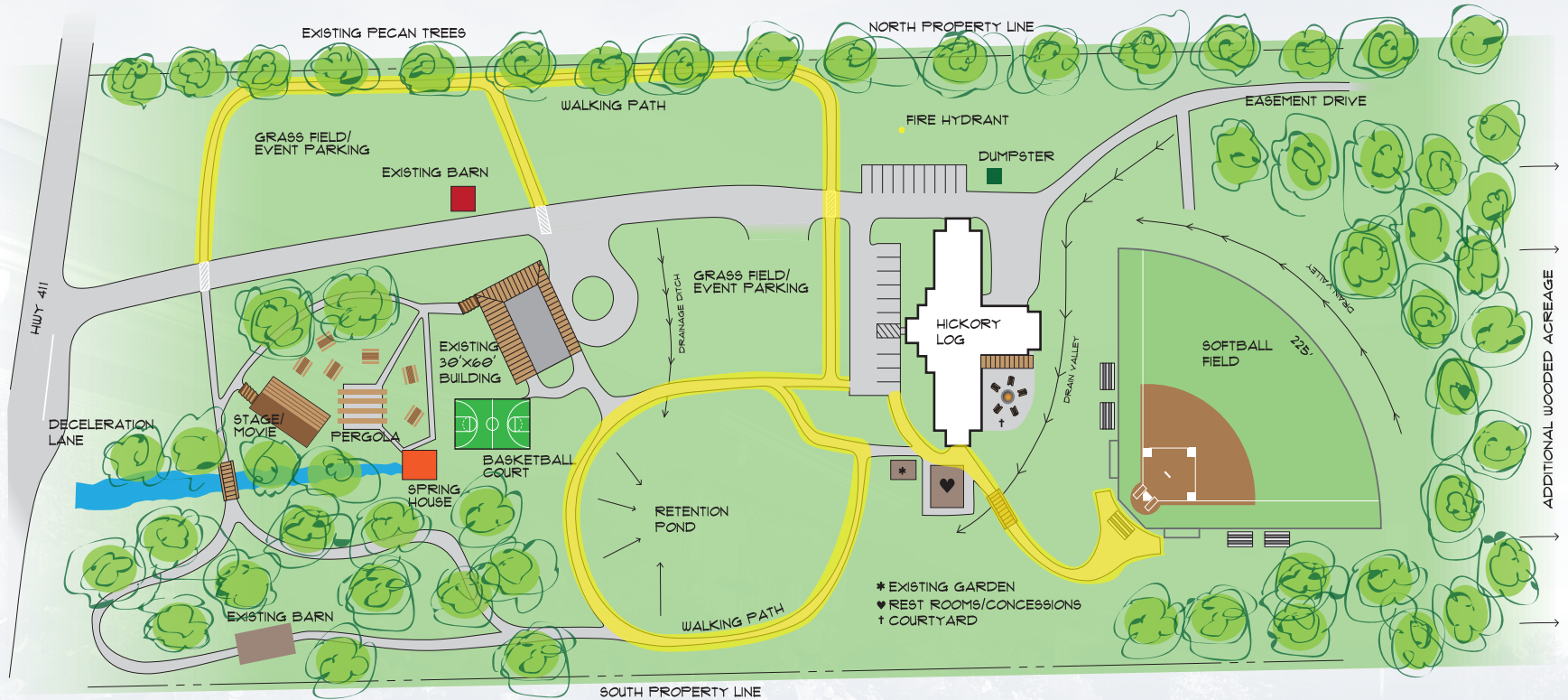
We are very intentional about treating our residents with the respect they deserve. The values that drive our organization are Equality, Inclusivity, Integrity, Servitude,

Advocacy, Respect, and Stewardship. We strive to model all of these values with everyone we encounter. We are not only serving our residents, but also their families. We realize that all families want to be together and there are countless reasons why families decide to trust Hickory Log with their loved ones. We don't judge, we just love.

Our open-door policy encourages families, volunteers, and others in the community to participate in the life of Hickory Log. Our residents love it when folks visit.

PARTNERING *with* HICKORY LOG

a personal care home



- ADDITIONS:** WALKING PATH
STAGE/OUTDOOR MOVIE SCREEN
PICNIC TABLES
COMPLETED BALL FIELD
BASKETBALL COURT
PERGOLA
DECK AROUND METAL BUILDING
RESTROOM/CONSESSION BUILDING
DECELERATION LANE
- RENOVATIONS:** SPRINGHOUSE
BARN
COURTYARD
METAL BUILDING INTO FITNESS ROOM



HICKORY LOG
a personal care home

ACTIVE INITIATIVE

FUTURE at HICKORY LOG

The plan for the Active Initiative includes the installation of an onsite walking path, outdoor amphitheater, fitness room/flex space, basketball court, and a softball field.

The goal of this initiative is to provide our residents with an opportunity to be healthier through a more active lifestyle and increase community awareness by encouraging the community to enjoy the amenities as well.

The yellow highlighted areas are complete: a

the walking path and the sidewalk to the softball field.

The completion of this much-needed plan relies on the community's support. Ask more about our Active Initiative and how to help put it into motion.

PARTNERING *with* HICKORY LOG

a personal care home

| Your Benefits | Equality \$15,000 | Inclusivity \$10,000 | Integrity \$7,500 | Servitude \$5,000 | Advocacy \$3,000 | Respect \$1,500 | Stewardship \$500 |
|---|----------------------|-------------------------|----------------------|----------------------|---------------------|--------------------|----------------------|
| Website | Logo | Logo | Logo | Name | Name | Name | Name |
| Social Media | Logo | Logo | Logo | Name | Name | Name | Name |
| Newsletter | Logo | Logo | Logo | Name | Name | Name | Name |
| Identify Yourself as a Annual Partner | ✓ | ✓ | ✓ | ✓ | ✓ | ✓ | ✓ |
| Volunteer Opportunities | ✓ | ✓ | ✓ | ✓ | ✓ | ✓ | ✓ |
| Name on Temporary Banner | ✓ | ✓ | ✓ | ✓ | ✓ | ✓ | |
| Thank You Ad in Daily Tribune | ✓ | ✓ | ✓ | ✓ | ✓ | | |
| Partnership Recognition in Email | ✓ | ✓ | ✓ | ✓ | ✓ | | |
| Sign at Hickory Log Gatherings | ✓ | ✓ | ✓ | ✓ | | | |
| Social Media Boost | ✓ | ✓ | ✓ | | | | |
| Table at Hickory Log Gatherings | ✓ | ✓ | | | | | |
| Name on Permanent Sign at Hickory Log | ✓ | ✓ | | | | | |
| Beautiful Backroads Ride Headline Sponsor | ✓ | | | | | | |
| | | | | | | | |

There are naming opportunities on the Partnership Form

BBC SPONSORSHIP *for* HICKORY LOG

a personal care home

| Your Benefits | Headline \$5,000 | Platinum \$2,500 | Gold \$1,500 | Silver \$1,000 | Bronze \$500 |
|--|---------------------|---------------------|-----------------|-------------------|-----------------|
| Website Advertising | Logo | Logo | Logo | Name | Name |
| Bike Ride Shirt/Ride Tickets* | 10 Each | 8 Each | 6 Each | 4 Each | 2 Each |
| Your Business on the Ride Shirt | Logo | Logo | Logo | Name | Name |
| Social Media Advertising | ✓ | ✓ | ✓ | ✓ | |
| Logo on Banners | ✓ | ✓ | ✓ | | |
| Dedicated Media Release | ✓ | ✓ | | | |
| Hickory Log Newsletter Advertising | ✓ | ✓ | | | |
| Booth at Event | ✓ | ✓ | | | |
| Poly Boards at Event | ✓ | ✓ | | | |
| Logo at All Rest Stops | ✓ | | | | |
| Exclusivity | ✓ | | | | |
| Name on Permanent Sign at Sosebee Park | ✓ | | | | |

*Tangible benefits are not eligible for tax credit

PARTNERING *with* HICKORY LOG

a personal care home

Partnership Form

Business Name _____

Contact Person _____

Mailing Address _____ City/State/Zip Code _____

Email _____ Phone Number _____

Partnership Levels

- ☐ Equality \$15,000
- ☐ Inclusivity \$10,000
- ☐ Integrity \$7,500
- ☐ Servitude \$5,000
- ☐ Advocacy \$3,000
- ☐ Respect \$1,500
- ☐ Stewardship \$500

Naming Opportunities

- ☐ Rocking Chair \$350
- ☐ Benches \$450
- ☐ Picnic Tables \$450
- ☐ Fire Pit \$3,000
- ☐ Softball Bleachers \$15,000
- ☐ Wrap-around Deck \$20,000
- ☐ Pergola \$20,000
- ~~☐ Walking Path \$20,000~~

Partnership Agreement and Morality Clause

By signifying the appropriate Partnership Level and signing below, I am committing the named company/person listed in the "Business Name" line (to be known as "Partner") above to pay the full amount selected within a twelve month period ending on _____.

By selecting a Naming Opportunity and signing below, I am committing the Partner to pay the full designed amount by this date: _____.

I also acknowledge that Hickory Log's Board of Directors can vote to revoke the Partner's displayed name associated with the selected item if the Partner commits any actions or affiliations that are inconsistent with Hickory Log's values, mission, or purpose. If such a vote occurs, Hickory Log maintains sole proprietary of named item.

Partner Signature

Partner Printed Name

Thank you for supporting the men and mission of Hickory Log.

Please return this completed form by mail with payment to P.O. Box 300 White, GA, 30184

Please email your company logo to Nikki , development@hickorylog.org

Questions: (770) 382- 6655